

LEWIS ALUMNI & FRIENDS

*MONTHLY*  
**JET-SETTER** 

Alumni and Friends,

Another exciting back-to-school season is upon us! Whether it's new students embarking on their academic journey or familiar faces returning with fresh goals, the spirit of growth and learning is palpable. Stay connected with us and be a part of this inspiring time at Lewis University.



**MONEY.COM RANKS LEWIS AS A TOP ILLINOIS PRIVATE UNIVERSITY**

The Money.com "Best Colleges in America 2024" ranking features Lewis University as one of the Top 11 private, non-profit higher education institutions in Illinois. Lewis earned a 4.5 on a five-star rating system.

**CALLING ALL LEWIS ALUMNI SWEETHEARTS!**

**Thank you to all of the Lewis Sweethearts who have responded to our recent request!** If you haven't, and you and your significant other are Lewis Sweethearts (both of you graduated from Lewis University), please email [alumni@lewisu.edu](mailto:alumni@lewisu.edu) and let us know. We would also love for you to attach a photo from your Lewis days as well as a current couple's photo. If you know of a Lewis Sweetheart pair, please let us know as well. We are offering a special ticket price (\$100/couple) and are planning a little something special for our Lewis Sweethearts at Signum Fidei on October 19! We want as many Lewis Sweethearts in attendance as possible. Register for Signum Fidei below!

**UPCOMING EVENTS:**

Save the date or register for an upcoming event. We hope to see you soon!

- **Lewis Hockey Club Golf Outing - Sunday, August 18, 2024:** Join us at our annual Golf Outing at the Links at Carillon as we support the Lewis University Hockey Club Team. There will be a shotgun start at 12:30 p.m. Sponsorship opportunities are available. [CLICK HERE TO REGISTER.](#)
- **Move-In Day – Wednesday, August 21, 2024:** Be a part of Freshman Move-In Day and help our Lewis freshmen move into their dorms! For more information, [CLICK HERE.](#)
- **Flyers Baseball Golf Outing - Saturday, September 7, 2024:** Join us at our annual Golf Outing at Wedgewood Golf Course as we support the Lewis University Baseball Team. Check-in at 8:30 a.m. Sponsorship opportunities are available. [CLICK HERE TO REGISTER.](#)
- **Lewis Fest 2024 - Sunday, September 29, 2024:** Lewis University students, families, and alumni are cordially invited to our 2nd annual celebration of Lewis Fest! Join us for games, activities, a DJ, Lewis experiences, lunch, Flyers Men's and Women's Alumni Soccer games, and Mass at 5 p.m. in the Sancta Alberta Chapel. Check - in begins at 11 a.m. [CLICK HERE TO REGISTER.](#)
- **Flyers Alumni Soccer Games - Sunday, September 29, 2024:** Cheer on Lewis University Women's and Men's Soccer teams as they take on Truman State. The Women's game starts at noon followed by the Men's game at 2:30 p.m. There will be a free giveaway for all fans! Lewis soccer alumni will have a special tent with drinks and snacks during the game. Men's Soccer alumni will take on the reserve players after the game! [CLICK HERE TO REGISTER.](#)
- **Signum Fidei - Saturday, October 19, 2024:** The night will include music from the LU Band with guest student performers, dueling pianos, dancing, a student art show, and more, all to support Lewis University's Mission Fund! Sponsorships are available! For more information and to purchase tickets, please [CLICK HERE.](#)

#### WE WANT TO HEAR FROM YOU!

If you are someone who supports Lewis University, we invite you to tell us why. We would like to know your story and what drives your generosity toward Lewis! Please share your WHY with us by clicking [HERE.](#)

#### DID YOU RECEIVE MISSION FUND ASSISTANCE WHEN YOU ATTENDED LEWIS?

We would love to hear your impact story if you are willing to share it with us. If so, please email Kathleen Hillsman at [khillsman@lewisu.edu](mailto:khillsman@lewisu.edu).

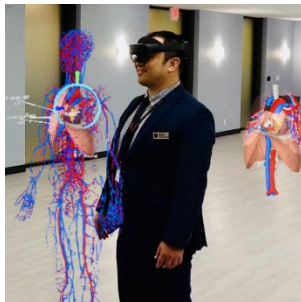
#### DID YOU KNOW?

Do you ever wonder about the people with names on our Romeoville campus buildings? Many are named after De La Salle Christian Brothers who served our institution and the Philip Lynch Theatre is one of those places.

Brother Philip Lynch, FSC, was one of the first Brothers to arrive at Lewis University in the 1960s, and is remembered by students in that decade as a favorite communications professor. Robert Sullivan, professor emeritus of theatre, once said of Brother Phillip, "He was... an excellent classical orator and oral interpreter who could quote from the Roman speakers in either Latin or English. He became a model to those in the speech field."

## CAMPUS HAPPENINGS

Thank you to the two Arco Murray project engineering staff members who inspired future innovators at Lewis' Girls Create with Technology camp on Thursday, June 27!



## DOCTOR OF PHYSICAL THERAPY PROGRAM UPDATE!

Program reviewers from the Commission on Accreditation in Physical Therapy Education (CAPTE) site visited Lewis July 17th through the 19th to meet with various faculty, staff and students and tour the new facilities in South Hall. The first cohort of students is scheduled to begin in January 2025.

## ALUMNI NEWS

Congratulations to **Matt Helwig '22** on recently signing with the MLB Minnesota Twins!

Congratulations to **Candy Barraza '22** and **Anthony Beimal '23**, Lewis sweethearts, on their recent engagement!

Thank you to **Jacob Barrett '22** who presented Lewis' Museum Studies workshop in April. He is currently in graduate school at Loyola University Chicago and serves as an educator at Naper Settlement.



The Lewis University History Center's "Reclaiming the Narrative: African American Voices from Joliet's Southend" banner exhibit was on display at the "Envision Fairmont: Updating the Fairmont Neighborhood Plan" event on June 22 at the Fairmont Community Center in Lockport, Ill. Recent Lewis University Alumna **Morgan Jennings '23** represented the Lewis University History Center at the event. The former history and theology student was available to answer questions and share the stories discovered by Lewis University students during their research.



**FLYERS ATHLETICS**

To stay up-to-date on all things athletics, [\*\*CLICK HERE.\*\*](#)

**INTERESTED IN EARNING AN ADVANCED DEGREE?**



Let us help you open new doors! Education is key to success. With a Lewis University graduate degree or certificate, you can acquire the in-demand skills that make employers sit up and take notice. Our faculty members provide the personal attention that will help you gain the skills and knowledge necessary to impact the world for the better. Whether you're looking to further your career in Healthcare, Technology, Education, Aviation, or Business, discover how we can help you achieve your goals. Check out our [list of programs](#) or contact us at (815) 836-5610 or [grad@lewisu.edu](mailto:grad@lewisu.edu).

### **Advance Your Skills with Expert-Led Continuing Education Courses**

Ready to gain new skills and advance your career? Lewis University's online Continuing Education courses provide high-quality, flexible learning opportunities in a variety of fields. From technology training to leadership development, our courses are designed to help you succeed.

The nature of work is changing faster than ever before. A study by LinkedIn revealed that skills required for the same job change by approximately 25% every four years. Our continuing education offerings are regularly updated to reflect these shifts, ensuring that you receive the most relevant and timely training available.

With expert instructors and 24-hour access, our courses are both convenient and effective. Enroll now to start your journey toward career growth and personal development. Visit our [Continuing Education Catalog](#) or contact our admissions office at [continuinged@lewisu.edu](mailto:continuinged@lewisu.edu) for more details.

### **LOOKING TO MAKE A JOB CHANGE?**

To check out Lewis U's Career Services resources for alumni: [CLICK HERE](#).

Interested in volunteering as a classroom speaker, career advisor, mock interview analyst, or professional resource for students? Or maybe you'd like to represent your company at one of Lewis' job fairs? If so, please email [alumni@lewisu.edu](mailto:alumni@lewisu.edu) and we will connect you!

**FREEWILL**

**FREEWILL** 

August is National Make-A-Will Month! Protect your loved ones by crafting a will through FreeWill. Lewis University has partnered with FreeWill, an easy-to-use online platform that guides you through creating a legally binding will in less than 20 minutes. It's quick, free, and ensures your loved ones' future security. Plus, you can leave a lasting legacy at Lewis University. To create your free will now [CLICK HERE.](#)

## WOULD YOU LIKE TO GET MORE INVOLVED IN THE LEWIS UNIVERSITY ALUMNI ASSOCIATION?

Become an Alumni Representative! Alumni Representatives make a commitment to serve their alma mater with their time, talent, and treasure. Would you like to learn more about the responsibilities of serving as a Lewis U Alumni Rep? [CLICK HERE.](#)



Welcome our newest alumni representative, **Marc Pozdol '88!** Marc, an Aviation Maintenance graduate, is a pilot for Jet Aviation Business Jets. He and his wife, Terry Niego '85, are Lewis Sweethearts. His advice to the next generation of Flyers is, "Even if you are a student who feels overwhelmed or unprepared by advanced education...go boldly and ask for guidance. There are many people that want to help."



## CONNECT ON SOCIAL MEDIA

To check out a comprehensive listing of all of our Lewis U social media channels, [CLICK HERE.](#) Like and follow the Alumni social media pages to receive updates on upcoming events and stories from Alumni.

## ALUMNI DIRECTORY

Register or update your information in our Lewis Alumni Directory! This is a great way to connect with classmates and network with fellow Flyers. To update your information or register, [CLICK HERE.](#)

## MAKE A GIFT

Consider making a gift to Lewis University and make an impact on a Flyer's education. To choose from a variety of impact areas, please [CLICK HERE](#).

### **LEWIS U NEWS**

To check out all the latest news from Lewis U, [CLICK HERE](#).

Questions? Please email Kathleen Hillsman in the Alumni Office at [khillsman@lewisu.edu](mailto:khillsman@lewisu.edu).

Lewis University  
1 University Parkway, Romeoville, IL 60446